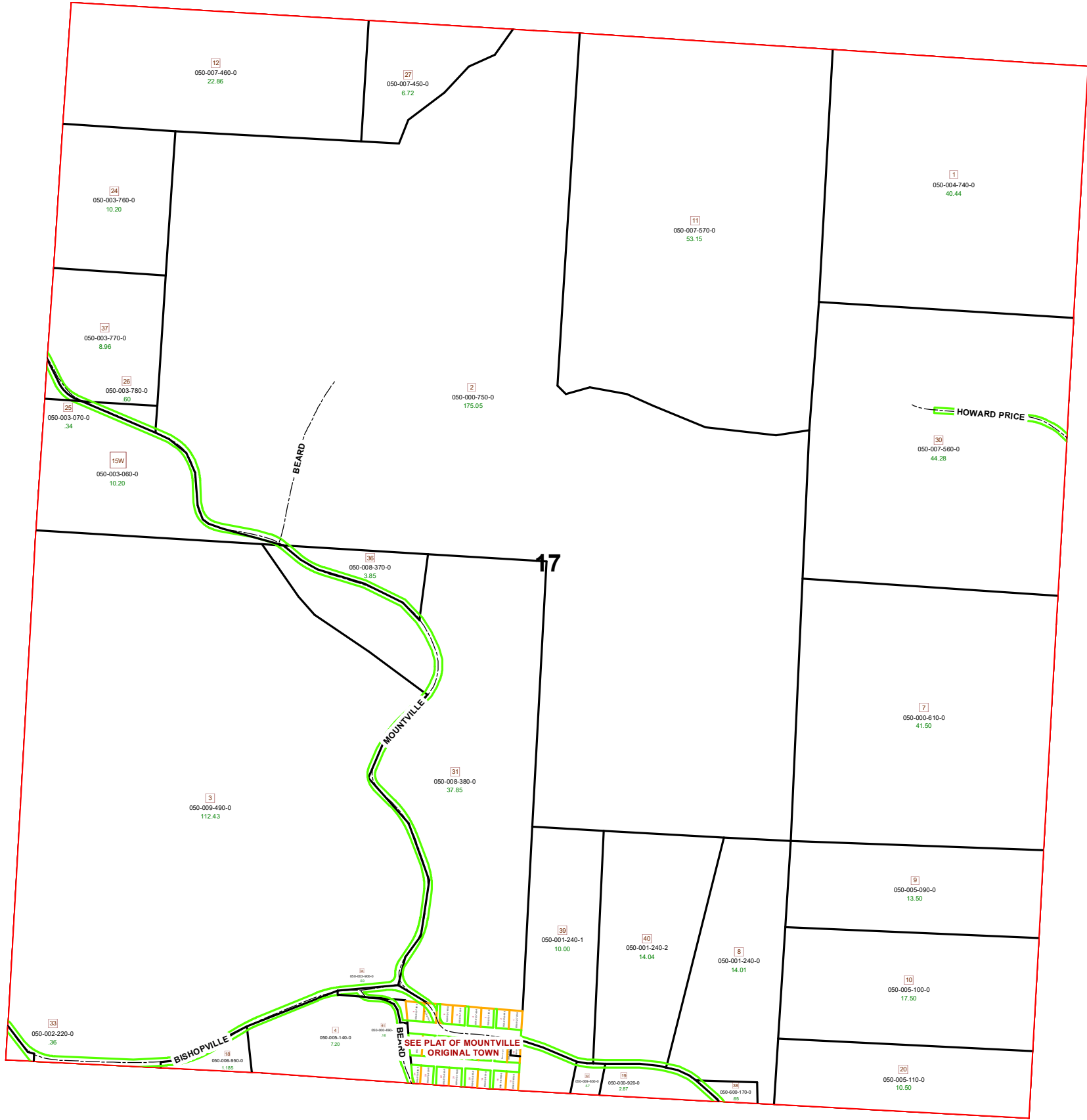


HOMER TOWNSHIP SECTION 17 R13 TWP 7 MORGAN COUNTY, OH

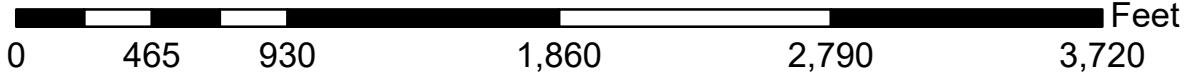


PIN	VOL	PAGE	Owner	LegalDescr	Acres
050-008-370-0	OR225	3204	ADDIS STEPHANIE RENEE	R13 T07 S17 SD 36	3.85
050-008-380-0	OR225	3201	ADDIS STEPHANIE RENEE	R13 T07 S17 SD 31	37.847
050-000-610-0	D.V	18 346	BARCLAY GARY & SUSAN	R13 T07 S17 SD 07	41.5
050-003-900-0	OR142	47	BEARD JOHN S TOD-JEREMY R BEARD	R13 T07 S17 SD 34	0.5
050-005-140-0	OR213	3452	BENNETT JON D & ANNE C	R13 T07 S17 SD 4 S	7.202
050-003-060-0	OR225	693	BOURNE TIMOTHY S & MATHEW R	R13 T07 S17 SD 15	10.2
050-003-070-0	OR225	693	BOURNE TIMOTHY S & MATHEW R	R13 T07 S17 SD 25	0.34
050-009-630-0	OR192	773	DAVIS JAMES W	R13 T07 S17 SD 32	0.57
050-002-220-0	D.V	18 79	DOLAN GARY D & LESLIE A	R13 T07 S17 SD 33	0.36
050-001-240-1	OR232	5531	FERRELL TROY L	R13 T07 S17 SD 39	10.003
050-007-560-0	OR218	191	H & L SYCAMORE VALLEY FARM LLC	R13 T07 S17 SD 30	44.28
050-007-570-0	OR218	191	H & L SYCAMORE VALLEY FARM LLC	R13 T07 S17 SD 11	53.15
050-006-950-0	OR158	68	HALLER JAMES R & DIANE A	R13 T07 S17 SD 18	1.185
050-001-240-2	OR226	974	HEAVRIN RICHARD D	R13 T07 S17 SD 40	14.043
050-600-170-0	D.V	17 536	HOMER TOWNSHIP TRUSTEES	R13 T07 S17 SD 38	0.646
050-004-740-0	OR207	1539	KOVACH ANDREW	R13 T07 S17 SD 1	40.439
050-005-110-0	OR178	665	LEEPER ROBERT F & THOMAS E TRUSTEES	R13 T07 S17 SD 20	10.5
050-005-100-0	OR178	665	LEEPER ROBERT F & THOMAS E TRUSTEES	R13 T07 S17 SD 10	17.5
050-005-090-0	OR178	665	LEEPER ROBERT F & THOMAS E TRUSTEES	R13 T07 S17 SD 9	13.5
050-003-780-0	OR227	1364	MONTGOMERY SHANE C & KATHLEEN J	R13 T07 S17 SD 26	0.6
050-003-770-0	OR227	1364	MONTGOMERY SHANE C & KATHLEEN J	R13 T07 S17 SD 37	8.96
050-003-760-0	OR227	1364	MONTGOMERY SHANE C & KATHLEEN J	R13 T07 S17 SD 24	10.2
050-000-750-0	OR157	655	MONTGOMERY SHANE C & KATHLEEN J	R13 T07 S17 SD 02	175.046
050-007-450-0	OR219	1246	PRICE JEFFREY C PRICE JOHN C TRUSTEE	R13 T07 S17 SD 27	6.72
050-007-460-0	OR219	1246	PRICE JEFFREY C PRICE JOHN C TRUSTEE	R13 T07 S17 SD 12	22.86
050-001-240-0	OR231	299	RIDGJE WAGH LLC	R13 T07 S17 SD 8	14.012
050-009-490-0	OR208	2966	WALKER RICHARD E	R13 T07 S17 SD 3	112.434
050-000-920-0	OR224	1466	WELCH JACK & CAROL	R13 T07 S17 SD 19	2.87



Boundaries

- Hidden (dashed line)
- Hydro (blue line)
- Lot (yellow line)
- Parcel (black line)
- Parcels (white box)
- ROW (green line)
- Section (red line)
- Township (dotted line)
- County (grey line)



Disclaimer: The information that these maps contains is for reference purposes only. Please bring any errors to the attention of the Engineer's Office staff.
Thank you